

**Dyno-Tech Dental Laboratory encourages this technique. If there are questions please call us at 800-522-4897 or 800-LAB-GUYS**

# How to fabricate a new crown that fits an existing RPD ... without forcing the patient to surrender the partial.

by Nelson Gendusa, DDS  
Director of Research

the Myron J. Dickerman  
lab (Sharon, MA).

When a tooth abutting a partial denture requires crowning, the dentist traditionally picks up the prosthesis in a full-arch transfer impression and sends it to the laboratory. This allows the technician to use the clasps as a guide when creating the crown contour.

For most patients, going dentureless (even for a few days) is unpleasant. Without the prosthesis, mastication may be difficult. If the RPD includes anterior teeth, the patient may spend the period between appointments hiding from the world in mortified seclusion.

The following technique uses a Blu-Mousse Super-Fast index to register the clasp-tooth-relationship. This allows the technician or dentist to create an accurate template of the clasp. As a result, the patient never has to surrender the prosthesis.

Incidentally, we didn't dream up this technique ourselves. It was contributed by Dr. Allen L. Weiner (Medfield, MA) who also sent the clinical photos (#8-12).\* The laboratory procedures were performed at

\* Incidentally, we filled in some of the missing illustrations (#1-7) using a typodont. As a result, the case switches from mandibular to maxillary mid-treatment.

## PART 1: How to make a clasp/tooth index using Blu-Mousse® Super-Fast material.

1. Prepare the tooth for a crown as usual and take the working impression using whatever technique and materials you prefer.

2. Insert the RPD in the mouth and assure that it is properly positioned (Figure 1).

3. Inject Blu-Mousse Super-Fast over the preparation. Continue expressing material until the clasps and occlusal rests are completely covered (Figure 2). Because Blu-Mousse has the fluffy consistency of whipped-cream, it will not flow. Therefore, there is no need to use a confining tray.

4. 30 seconds later remove the RPD with the Blu-Mousse blob attached (Figure 3). (Notice the impression of the preparation.)

5. Using a blade, carefully trim away the



Since resin template provides an accurate clasp reproduction, the ceramist can create the proper crown contour without using the RPD as a guide. The patient doesn't have to function even a single day without the prosthesis.

Blu-Mousse until the outer surfaces of the clasps and rests are exposed (Figure 4). Cut away any additional material that prevents the Blu-Mousse index from being removed (Figure 5).

6. Remove the index from the partial denture by pushing it in an apical direction (Figures 6 & 7)

Temporize the preparation, and send the patient home wearing the partial denture.

(Continued on page 2)



Figure 1



Figure 2

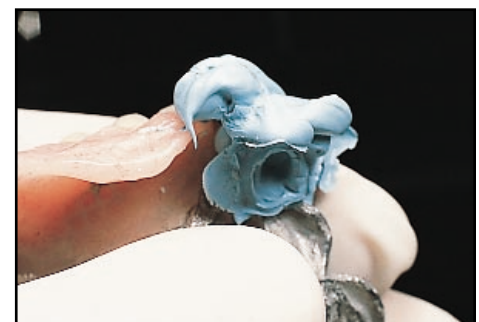


Figure 3



Figure 4



Figure 5



Figure 6

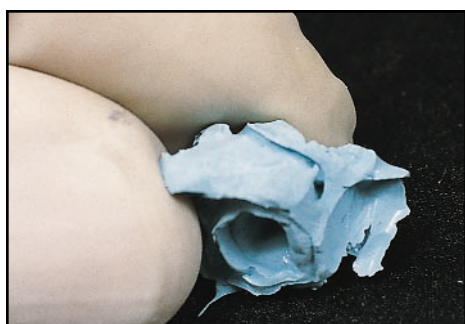


Figure 7



Figure 8

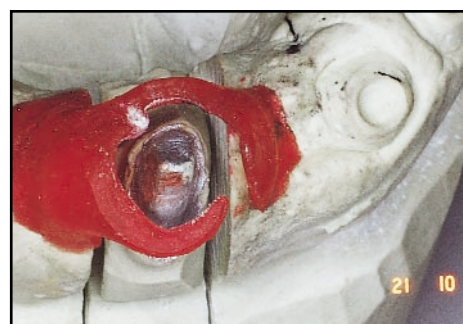


Figure 9



Figure 10

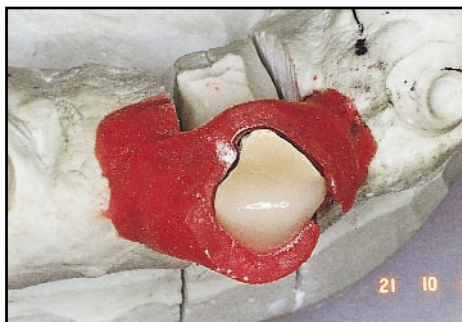


Figure 11



Figure 12

## PART 2: How to create a clasp-template using pattern resin

1. Pour the working model and separate the dies as usual.
2. Seat the Blu-Mousse index onto the prepara-

tion. Using a Neelon technique (also called "brush-dip" or "salt-and-pepper" technique), flow conventional pattern resin into the impressions of the clasps on the surface of the Blu-Mousse index.

After the impression of the clasps has been filled, extend the resin outward in order to give the template enough bulk to withstand handling. (Note: The only part of the template that must precisely recreate the clasp and rest is the internal surface ... where the clasp metal faces crown.)

3. Continue building the pattern resin outward until the template sits securely on the model on either side

of the index (Figure 8).

4. After the resin has set, carefully remove the template from the Blu-Mousse. (To avoid damaging the resin, it may be necessary to cut the Blu-Mousse index into pieces.)

5. Replace the template onto the model. (Figure 9)

6. Use the resin template as a contour-guide during crown fabrication. (Figures 10 & 11)

7. When the patient presents for crown cementation, the new crown fits the RPD with few (if any) adjustments ... **even though the technician never saw the actual partial denture!** □

